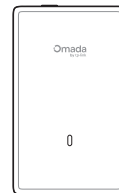
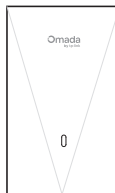
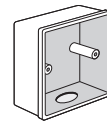


A Wall Plate Access Point can be mounted into a wall junction box. The junction box should be pre-installed with an in-wall Ethernet cable connected to a PoE switch.

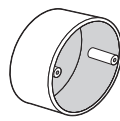
This guide applies to the following EAPs:



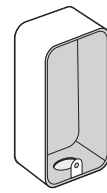
Compatible wall junction boxes:



86 mm
wall junction box



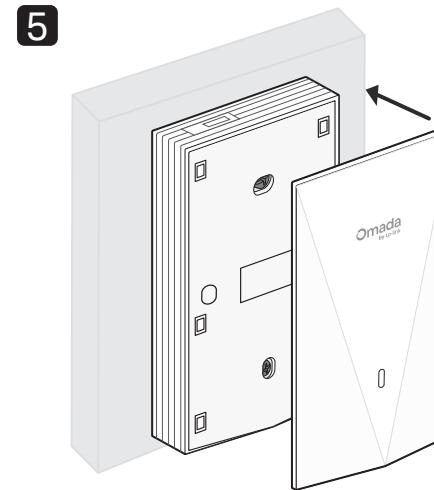
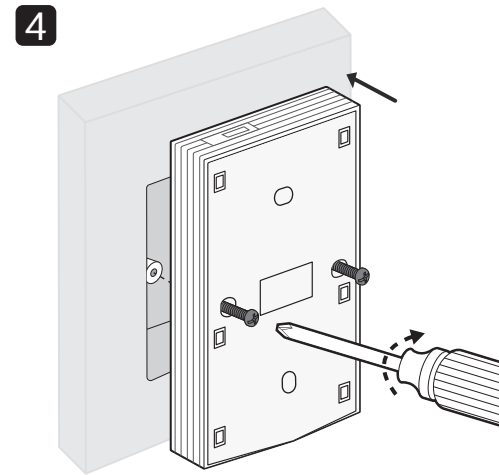
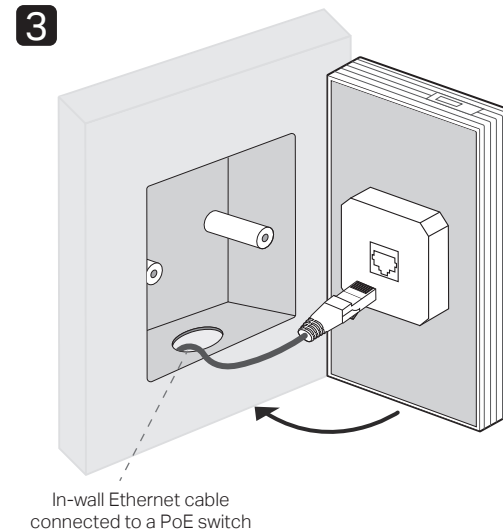
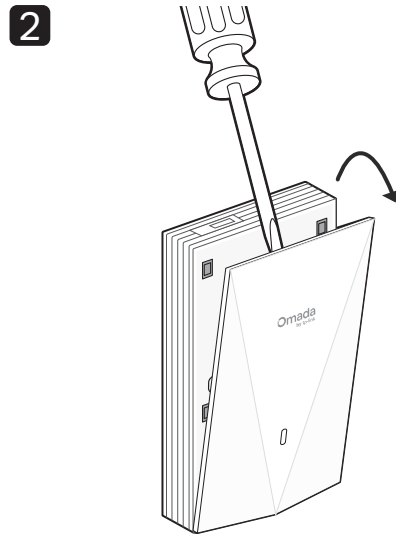
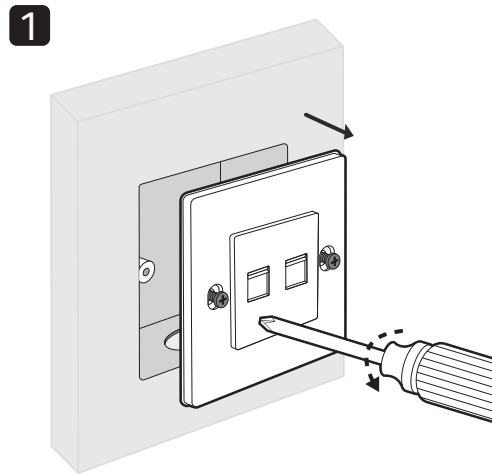
Standard EU
wall junction box



Standard US
wall junction box

Installation

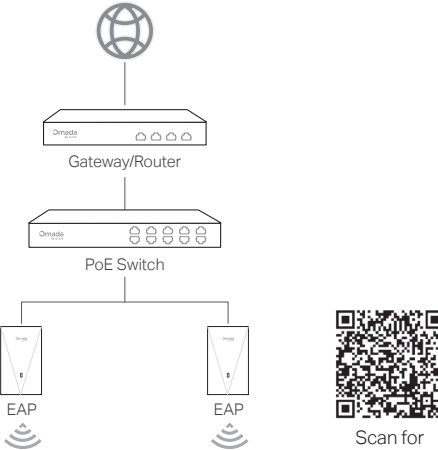
Note: For simplicity, this guide uses EAP655-Wall and an 86 mm wall junction box for demonstration.



Configuration

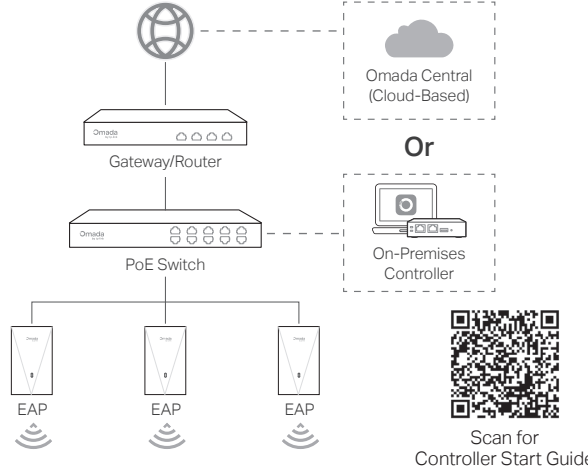
Option 1: Standalone Mode

Configure and manage each EAP on its standalone page.



Option 2: Controller Mode

Configure and manage EAPs (and other Omada devices) centrally with an Omada Controller.



Omada App

With the TP-Link Omada app, you can access and manage your Omada devices at a local site or remotely with a tap of your phone.



More Configurations

For more configurations, refer to the User Guides of the Omada Controller and Omada Access Points at: <https://support.omadanetworks.com/document/>



Safety Information

- Keep the device away from water, fire, humidity or hot environments.
- Do not attempt to disassemble, repair, or modify the device. If you need service, please contact us.
- Do not use the device where wireless devices are not allowed.
- (For IN version) This device can be powered only by equipment that complies with Limited Power Source (LPS) of IEC 60950-1.
(For other versions) This device can be powered only by equipments that comply with Power Source Class 2 (PS2) or Limited Power Source (LPS) defined in the standard of IEC 62368-1.
- The PoE ports shall not be used to charge lithium batteries or devices supplied by lithium batteries.

TP-Link hereby declares that the Access Point is in compliance with the essential requirements and other relevant provisions of directives 2014/53/EU, 2011/65/EU and (EU) 2015/863.

The original EU Declaration of Conformity may be found at <https://www.tp-link.com/en/support/ce/>

TP-Link hereby declares that the Access Point is in compliance with the essential requirements and other relevant provisions of the Radio Equipment Regulations 2017.

The original UK Declaration of Conformity may be found at <https://www.tp-link.com/support/ukca/>

More Resources

Main Site	https://www.omadanetworks.com/
Video Center	https://support.omadanetworks.com/video/
Documents	https://support.omadanetworks.com/document/
Product Support	https://support.omadanetworks.com/product/
Technical Support	https://support.omadanetworks.com/contact-support/

Warranty

For details on the warranty period, policy, and procedures, visit <https://support.omadanetworks.com/warranty-services/>.

Support

For technical support, user guides, and other information, please visit <https://support.omadanetworks.com/>, or simply scan the QR code.



Quick Installation Guide

Wall Plate Access Point



Scan for EAP Start Guide

Note: EAP655-Wall is used as an example throughout the guide. Images may differ from your actual product. ©2025 TP-Link 7100002458 REV1.20.1